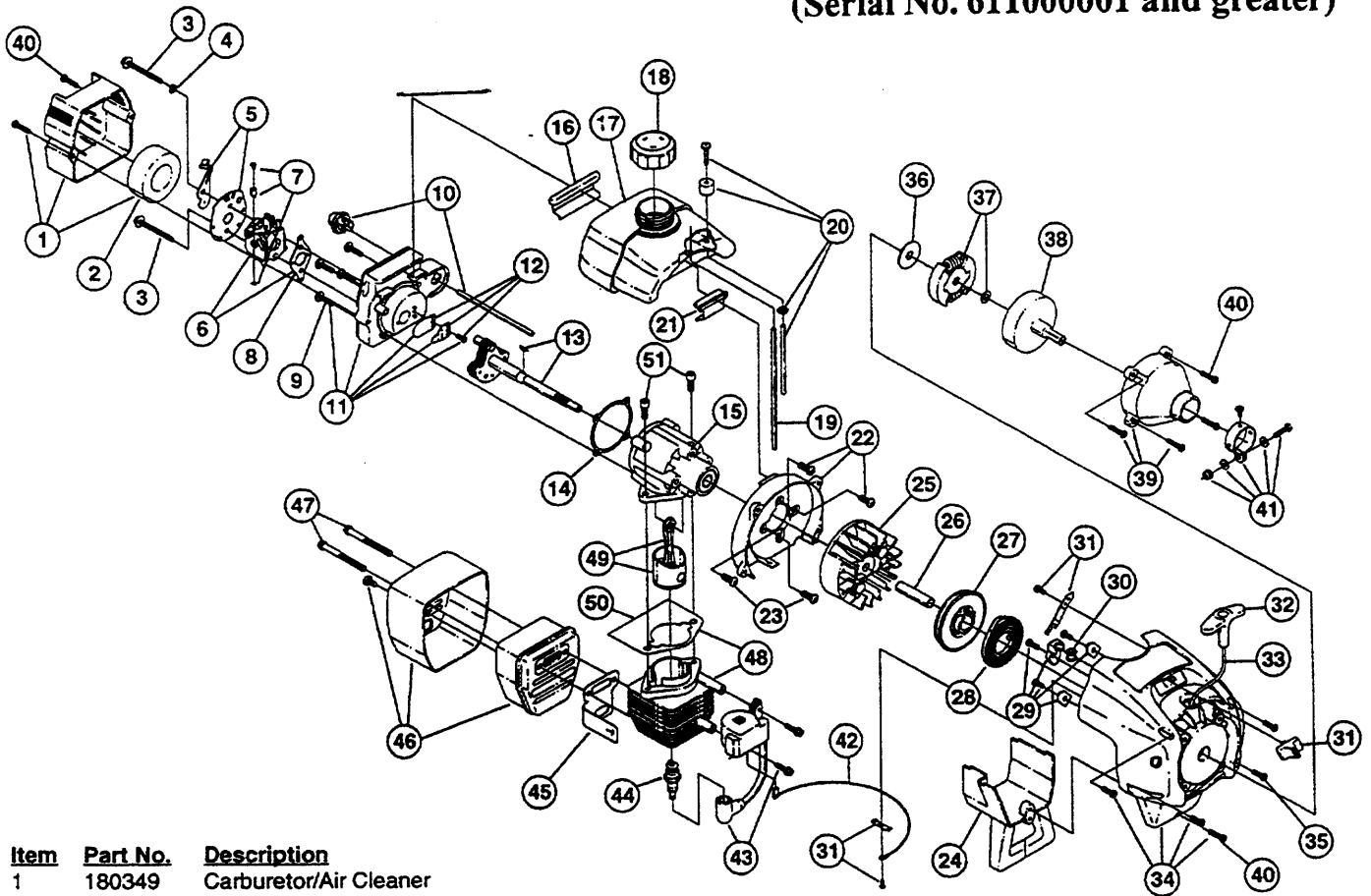


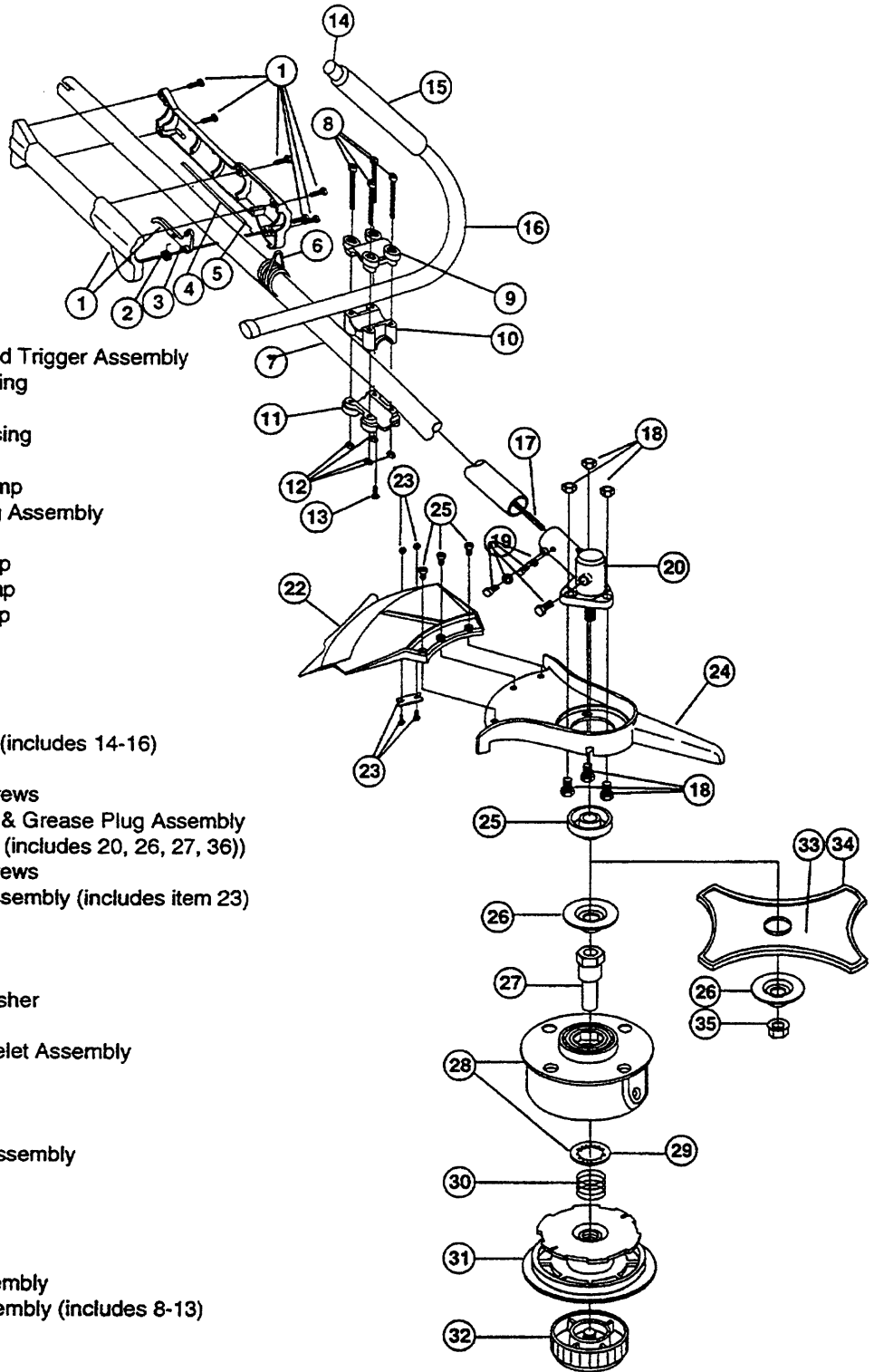
# ENGINE PARTS - MODEL 780r (Serial No. 61100001 and greater)



Item	Part No.	Description	Item	Part No.	Description
1	180349	Carburetor/Air Cleaner Cover Assembly (includes 2)	35	181862	Housing Screw
2	180350	Air Cleaner Filter	36	181074	Clutch Washer
3	180351	Carburetor Mounting Screw Assembly	37	181445	Clutch Rotor Assembly
4	180352	Wavey Washer	38	153592	Clutch Drum Assembly
5	180353	Choke Lever and Plate	39	180098	Clutch Cover Assembly
6	181675	Carburetor Assembly W/Limiter Caps (includes 20)	40	181345	Cover Screw
7	682048	Throttle Adjustment Assembly (Walbro)	41	153597	Upper Clamp Assembly
7	180092	Throttle Adjustment Assembly (Zama)	42	180036	Wire Lead
8	610675	Carburetor Gasket	43	683390	Module Assembly
9	181860	Carb Mount Screw	44	610311	Spark Plug
10	181558	Primer and Hose Assembly	45	180980	Exhaust Gasket
11	180354	Carb Mount Assembly	46	180119	Muffler Assembly (includes 45 & 46)
12	684451	Reed Assembly	47	147575	Muffler Mounting Bolt Assembly
13	181498	Power Shaft Assembly	48	181622	Cylinder Assembly (includes 51)
14	612115	Carburetor Mount Gasket	49	684449	Piston and Rod Assembly
15	180026	Crank Case Service Assembly (includes 13)	50	610674	Cylinder Gasket
16	612134	Rear Mounting Pad	51	181870	Cylinder Bolt
17	181438	Fuel Tank Assembly (includes 18-20)	*	180011	Engine Gasket Kit
18	181559	Fuel Cap Assembly	*	180602	O.E.M. Carburetor Repair Kit (Walbro)
19	181168	Fuel Return Line	*	180090	O.E.M. Carburetor Repair Kit (Zama)
20	682039	Fuel Line Assembly	*	181069	Gasket Diaphragm Repair Kit (Walbro)
21	145308	Front Mounting Pad	*	180091	Gasket Diaphragm Repair Kit (Zama)
22	153520	Shroud Assembly	*	180530	Piston Ring
23	181861	Shroud Screw	*	181623	Short Block Assembly (includes 13, 15, 44, 48-51)
24	153403	Shroud Extension and Stand	*	610676	Flywheel Key
25	180929	Flywheel Assembly	*	181501	Starter Housing Screw Set
26	181065	Spacer	*	180986	Carburetor Limiter Cap Set (Walbro)
27	181597	Recoil Pulley Assembly	*	181562	Carburetor Limiter Cap Set (Zama)
28	613102	Recoil Spring	*	610309	Crankcase Seal
29	181441	Pulley Retainer Assembly	*	181599	Clutch Springs (Qty. 2)
30	611061	Rope Guide			
31	181442	Switch Assembly (includes 42)			
32	181079	Pull Handle			
33	613103	Rope			
34	181443	Starter Housing Assembly (includes 27-34 & 42)			

# BOOM AND TRIMMER PARTS-MODEL 780r

(Serial No. 611000001 and greater)



Item	Part No.	Description
1	181678	Throttle Housing and Trigger Assembly
2	610314	Throttle Trigger Spring
3	181556	Throttle Trigger
4	181554	Throttle Cable Housing
5	180127	Throttle Cable
6	610327	Shoulder Strap Clamp
7	147486	Drive Shaft Housing Assembly
8	181811	Screw
9	181812	Upper Handle Clamp
10	181813	Middle Handle Clamp
11	181814	Lower Handle Clamp
12	181815	Nut
13	145569	Anti-Rotation Screw
14	612021	Tube Closure
15	612831	Grip
16	180286	J-Handle Assembly (includes 14-16)
17	180406	Flexible Drive Shaft
18	147539	Guard Mounting Screws
19	147677	Mounting Hardware & Grease Plug Assembly
20	147488	Gear Box Assembly (includes 20, 26, 27, 36))
21	683304	Guard Mounting Screws
22	683299	Guard and Blade Assembly (includes item 23)
23	682061	Blade Assembly
24	147492	Guard Mount
25	147489	Blade Driver
26	147490	Blade Retaining Washer
27	612483	Spool Shaft
28	683301	Outer Spool and Eyelet Assembly
29	612026	Retainer
30	610636	Spring
31	147495	Inner Reel
32	180814	Bump Head Knob Assembly
33	145873	Blade with Cover
34	613231	Blade Cover
35	147491	Lock Nut
*	613226	Locking Rod Tool
*	682075	Shoulder Strap Assembly
*	683295	Handle Bracket Assembly (includes 8-13)

### Optional Accessories

- \* 180120 Cutting Line, 50 ft (0.095 line)
- \* 147345 Spool and Line Assembly (40 ft.)
- \* 147498 Complete Head Assembly (includes 27-32)
- \* 180014 Blade Retaining Kit (includes 26 & 35)
- \* 147541 Ryobi 2-Cycle Oil (48 - 4 oz. bottles)

\* not shown